

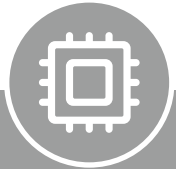
JINPAT SLIP RING APPLICATION

ENGINEERING MACHINERY



Technical Capacity

Electric



Max.500 circuits



Max.4200A



Max 10,000V



Advantage

USB3.0,10G Ethernet, HDMI, SDI,
ProfiNet, Powerlink, SercosIII,
EtherCAT, Encoder, EtherNet/IP...

Environment



Max.IP68



Air 7.5kPa(18000m)
Underwater 4000m



Exd IIB T4 GB



Accelerate 18000g



-55 °C ~+250 °C

Structure



Max.30,000rpm



370million revolutions
2.3@2000rpm



Torque
Min. 0.02 N.m



ID Max. 1m



Advantage

Integration :
power+liquid+HF+FO

Typical Application



Crane



Excavator



Offshore Cranes
(Platform Cranes/Port Cranes)



Fire Truck



Ship Crane

Typical Application-Crane

SOLUTIONS

- LPTS000-0430-0705-02S
- LPTS000-0530-1505
- LPTS000-0330-1105-SY16

TECHNICAL FEATURES

- Classic model, high stability, low failure rate
- Simple shape, easy to install
- High protection IP66~IP68



Typical Application-Truck-Mounted Crane

SOLUTIONS

- LPTS000-0220-0605
- LPTS000-0220-09S
- LPTS000-0230-1005-ZLC

TECHNICAL FEATURES

Compact structure. Can be installed in small spaces

Protection grade IP65.

Transmit a variety of signals. Integrated connectors



Typical Application-Excavator

SOLUTIONS

- LPTS000-0602
- LPTS000-0430-08S
- TSR-185HW-CAN
- SPC-12A-1202-IP67

TECHNICAL FEATURES

Integrity structure, high anti-shock level

Outdoor use, easy to disassemble

High IP grade, suitable for a wide range of outdoor weather



Typical Application-Aerial Work Vehicle

SOLUTIONS

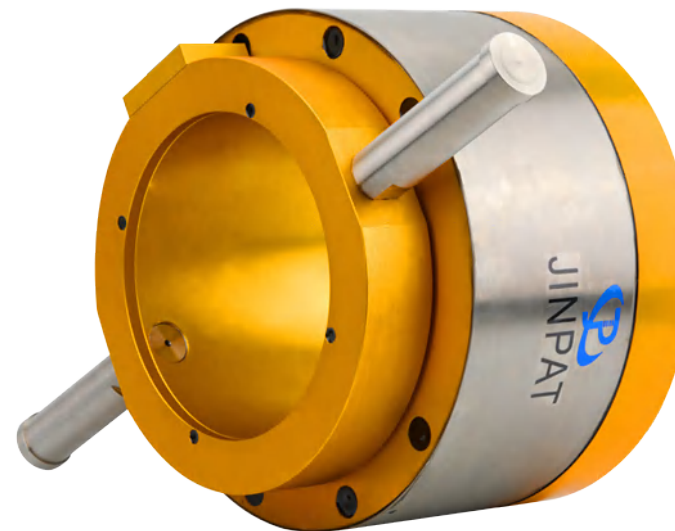
- LPTS000-0620-04S
- LPTS000-0620-02S
- LPTS000-0420-0605-02S

TECHNICAL FEATURES

Special installation method to meet different demand requirements

Proven and stable structure, extremely low failure rate

Integrated encoder 360° precise angle detection



Typical Application - Fire Truck

SOLUTIONS

- LPTS120-0230-0402-14S
- LPTS000-0440-14S(JP08-088-01)
- LPTS174-0440-14S

TECHNICAL FEATURES

Large inner diameter, specially customized for video signal

Designated connectors are equipped on both sides for easy assembling and disassembling

IP67, to meet the special environment during operation



Typical Application—Tower Crane

SOLUTIONS

- LPT012A-0602B
- LPA000-03300-01N-01PE
- LPTS000-03100-01N-01PE

TECHNICAL FEATURES

Excellent waterproof performance, suitable for outdoor working environment

Direct on-site installation, simple and convenient operation

Equipped with a junction box for easy connecting



Typical Application—Ship Crane

SOLUTIONS

- LPA000-03280-01PE-0440-1605
- LPA000-03560-01PE-0150-1608
- LPA000-03300-10S

TECHNICAL FEATURES

Excellent waterproof performance, adapted to the harsh environment at sea

Multi-channel design for power, common signal, CAN bus signal, etc



Typical Application- Ship Crane

SOLUTIONS

● LPA000-06800-01PE-03200-3020-04L

TECHNICAL FEATURES

Transmitting power, ship control signals,
analog and digital signals

Large size: 1.3*1.3*3M

High protection level, suitable for harsh
offshore environment



Typical Application- Fire Truck

SOLUTIONS

- LPA000-04320-0410
- LPA000-03480-01N-01PE-0410
- LPA000-04300-01PE-11S

TECHNICAL FEATURES

Excellent waterproof performance, reaching IP66, meeting the outdoor working environment; Power, common signal, CAN bus signal and other multi-channel design





BUSINESS
PARTNERS

